



CALDERA



FULL-FEATURED SOLUTIONS FOR **PRINTING BUSINESSES**



Caldera is headquartered in Strasbourg, France with international staff members in Argentina, Brazil, China, Greece, Italy, Mexico, and United-Kingdom with a subsidiary in Minneapolis, USA.

CALDERA is a software company with close to 25 years of experience in developing, marketing and supporting high-quality technological software for wide-format imaging, with a commitment to increasing productivity, cost-efficiency and color output.

Our suite of award-winning, production-orientated print and Print-and-Cut workflow programs provide color management, imaging and processing solutions for large and grand-format peripherals.

OUR ACTIVITIES:

Signs, Digital Graphics and Visual Communications



Built for speed, reliability and flexibility, Caldera RIP solutions continue to represent the cutting edge of wide-format production software, supporting all popular large-format printer manufacturers. Caldera keeps your printing business adaptable with the ability to add extra modules – including cutting solutions and cost management – as and when you need them.

- Fully modular and scalable Print-and-Cut workflow
- Powerful ICC color calibration engine
- Advanced tiling and nesting features
- Powerful color management
- LFP business management
- Textile & Industrial printing
- Inkjet intelligence
- Digital signage

MORE THAN JUST A RIP

a full-featured solution for printing businesses

Industrial Printing

Being well established in driving a wealth of functional and decorative applications and compatible with all common digital technologies, Caldera's native functionality is already at the heart of industrial production, integrating various processes into a single, user-focused solution.



- Extensive Color Standards conformity
- Robust workflow capabilities
- Adaptable to different types of third party workflow

Textile Printing

Caldera's textile software puts an accessible, yet powerful textile printing solution. Our RIP includes features such as Step&Repeat, which automatically optimizes the pattern layout by applying a shift, pivoting or inverting by applying a shift to ensure precise pattern matching, while our Custom Inkset tool aids in the creation and management of new inksets.



- Optimized for sophisticated textile printing
- Pattern repetition & Nesting
- Custom Inkset management
- Colorbooks

Mixing Print and Digital Signage

VariableDisplay is a digital signage solution which integrates seamlessly with digital print output to create point-of-sale materials, retail signage, event graphics and a range of other exciting projects.



- An intuitive GUI with advanced but easily controlled playlist management
- Drive any type of display, video projector or electronic billboard
- Multiple media format support



The latest edition of Caldera's award-winning imaging software puts a re-imagined user interface and streamlined core architecture at the heart of a number of upgrades that deliver massive productivity to all types of wide-format print business.

V10 harnesses the latest version of APPE and a wealth of new functions to create a suite that enables blistering throughput speeds and a hitherto unseen fluidity of control for operators, making it the RIP to beat for graphic arts professionals.



10 reasons to upgrade to Version 10

#1 *ContourNesting, Tex&Repeat and PrintBoard* are now included!

Version 10 opens up exciting new market opportunities for Caldera users: textile, wallpaper, ceramics, glass, wood ...

#2 Increase your RIPing speeds

Unleashing the power of smarter algorithmic processing, Version 10 RIPs up to two times faster than previous versions and up to seven times faster with the GPGPU option.

#3 Receive live updates

Update notifications about builds and versions are now automated via an online service, ensuring that critical updates reach the user rapidly.

#4 Set up faster workflows

The new QuickPrint feature allows a user to send a job to print using a preset configuration.

#5 Create advanced tiling projects

New & improved Tiling+ now makes it possible to create tiles of different sizes, allowing users to access new markets, such as multi-canvas applications.

#6 Enjoy our new GUI

Designed for ease of use, the new, fully-featured Version 10 interface allows users to focus only on live tasks. Newly designed icons and markers have been standardized to create a fresh modern style within the GUI.

#7 Identify Jobs with QR codes

V10 users can add QR Codes alongside a print, with an automated cut path, to enable easy removal as required.

#8 Add grommets easily

Grommets and eyelets can be easily added to artwork from within the Print module.

#9 Download new profiles

Profiles can be accessed from within a new online library, using EasyMedia.

#10 RIP larger files

Through the inclusion of APPE 3.3, which carries with it all the benefits of 64bit data handling, users can now RIP massive files that were previously hindered by a lack of on-board memory. This means users can leverage their processor's full active memory to provide additional efficiencies across the full job queue.

OUTSTANDING PRODUCTION PRINTING SOLUTIONS FOR THE GRAPHIC ARTS

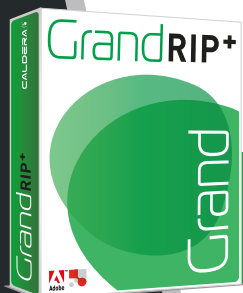
Built for speed, reliability and flexibility, our solutions represent the cutting edge of wide-format production software, supporting all popular large-format print manufacturers.

Incorporating key features such as automatic nesting (both true shape and regular), advanced tiling, ICC color support and task automation, **Caldera** is a powerful tool for print operators looking to streamline their production across multiple devices, while simultaneously achieving consistent color output and saving ink and media on all their prints.

Our industry award winning solutions for Print-and-Cut Workflow, **VisualRIP+** and **GrandRIP+** are the preferred choice of some of the most successful print shops around the world.



Developed for medium- to high-production, multiple device environments.



Developed for high-production, multiple device environments, including flat-beds and grand-format printers.

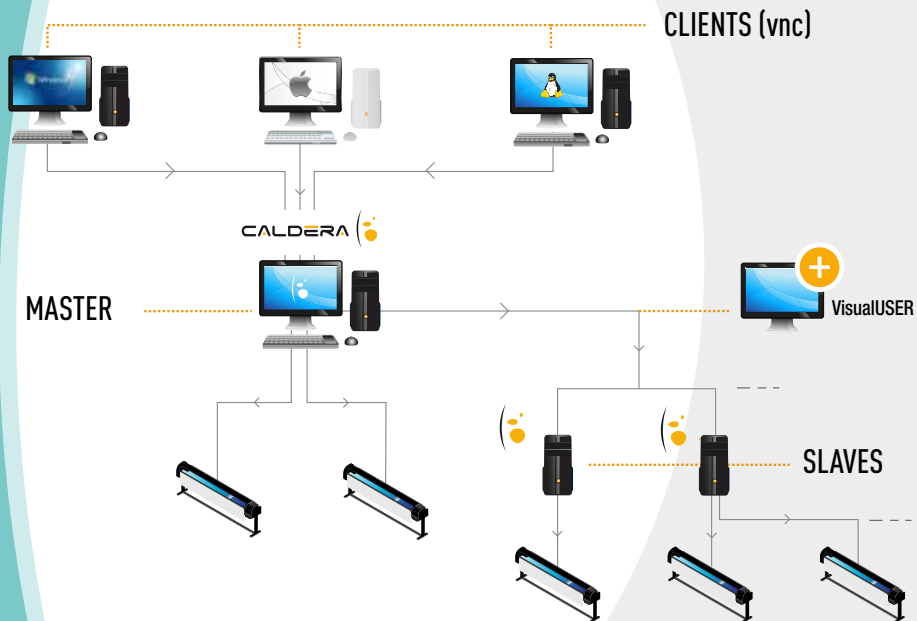


What's in the box ?

FEATURES	VISUAL	GRAND
Printer Control Type	Direct	Controller & Direct
Printer Set-up	Multiple devices	Multiple devices
Cut workflow capability	Roll Cutter	Roll Cutter & Flat-bed
Print/Production Volume	Mid to High	Mid to High
Printer Formats	Roll-to-roll	Roll-to-roll & Flat-bed
Inkjet Types	Aqueous, Eco-Solvent, Solvent, Latex, UV, Dye-Sub	Aqueous, Eco-Solvent, Solvent, Latex, UV, Dye-Sub
Applications	Signs, Digital Graphics & Visual Communications, Textile Printing	Signs, Digital Graphics & Visual Communications, Textile & Industrial Printing
PDF WORKFLOW		
True Adobe PDF Print Engine 3.3	✓	✓
PRODUCTIVITY		
Multi-task environment	✓	✓
RIP & Print while you Print	✓	✓
HQ Preview	✓	✓
Step & Repeat	✓	✓
Tiling+	✓	✓
SignMark	✓	✓
Layout and Compose	✓	✓
VisualUser	Option	Option
VisualRemote	Option	Option
COLOR MANAGEMENT		
ICC Support	✓	✓
Spot Color matching & White Ink	✓	✓
EasyMedia	✓	✓
Color Libraries (Pantone, HKS, RAL, NCS, PPG)	✓	✓
Online Standard Color Profile Library	✓	✓
Custom InkSet	Option	Option
AUTOMATION		
Task Automation	✓	✓
Hot Folders	✓	✓
Nest-O-Matik	✓	✓
QuickPrint	✓	✓
CUT WORKFLOW		
Cut Marks	✓	✓
Contour Nesting	✓	✓
VisualCut	✓	✓
GrandCut	Option	✓
Trim-O-Matik	Option	Option
PRODUCTION OPTIMIZATION		
QR Codes	✓	✓
PrintBoard	✓	✓
CostProof	Option	Option
CostView	Option	Option
InkPerformer	Option	Option
QUALITY MONITORING		
Print Standard Verifier (FOGRA)	Option	Option
Print Standard Verifier (G7)	Option	Option

MASTER-SLAVE ARCHITECTURE

With Caldera's Primary-Replica (Master-Slave) architecture, a single master RIP computer (Mac or PC) can manage unlimited RIP or printing replica devices for scalable distributed computing over a network. Caldera is a scalable RIP solution to drive all the printers and cutters on your network.



USER BENEFITS

- Consolidates control to a single platform
- Reduces training time and confusion
- Increases throughput and color homogeneity
- Purchase one update for all machines
- Cost-efficient

CUT WORKFLOW

Caldera drives the industry's best cutters, whether contour or XY devices.



Caldera's Cut Workflow makes even complex cutting easy with the ability to manage multiple contours in one file.

- Ensures precision cutting for your Cut Workflow
- Manages multiple contours in one file
- Generates a machine-specific file for each individual job
- Automatically sets up cut marks for specific devices
- Guides the cutter along a document's embedded contours

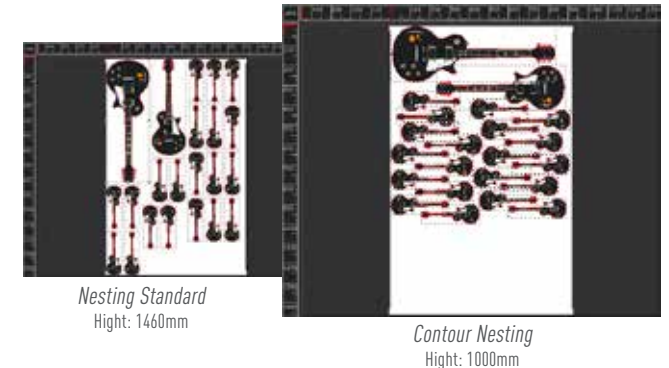


Now included!

Optimize your media usage with true shape nesting

Included in VisualRIP+ and GrandRIP+

Contour Nesting takes into account an image's true shape so the element can be optimally positioned to prevent excess wastage. Caldera now detects the exterior cut contour and uses it to optimize nesting.



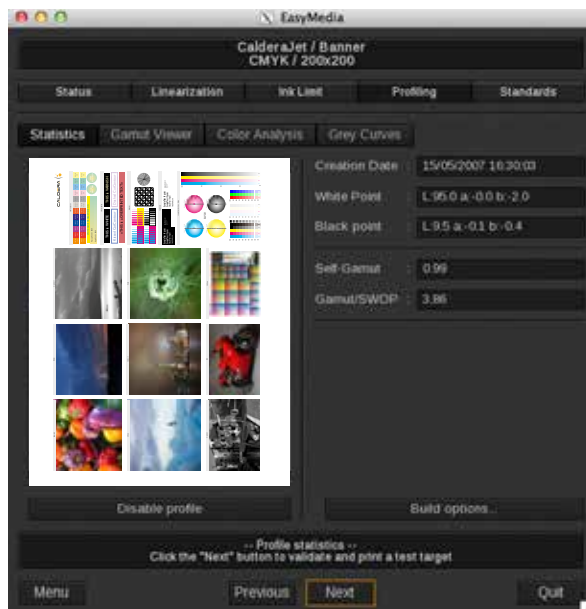
COLOR MANAGEMENT

Caldera's color solutions give you high quality, 'on the mark' output. Our software packages include an easy and powerful color management solution based on standard ICC technology.

Included in all packages!

Calibrate your print configuration
for superb color precision

EasyMedia is a step-by-step wizard which allows you to specify the color gamut for any print configuration with a given media in no time at all. Thanks to the simple steps in **EasyMedia** to calibrate transition, linearization and ink use, printers can fine-tune their color processing for optimum stability and consistency across their output.



- Create your ICC profiles
- Download profiles from our online library

Manual Spectrophotometers:



The **i1Pro2** is a handheld, easy-to-use and economical color measurement device that provides accurate readings for creating profiles.



Because of the **Caldera ColorPad's** portability and 'computer independence', this professional spectrophotometer device can be placed and used directly on the printer. An integrated touch display simplifies interaction with the device and gives immediate feedback. The **ColorPad** is the ideal tool for measuring a wide variety of media used in professional digital printing including wide- and grand-format when away from the desk.

Automated Spectrophotometers:



A complete solution for color management and profiling, **TotalColor's** automated table measures media both opaque and transparent with a changeable measuring aperture of 2, 6 and 8 mm for high- and low-resolution prints, with plain or structured face. The **TotalColor** table has the ability to read materials up to 20mm thick.



Caldera EasyColor is an automated solution for linearization and profiling of photographic and wide-format output devices for flexible reflective and transparent materials with a thickness up to 0,7 mm. Easy to use, versatile and compact, **Caldera EasyColor** is the simplest way to achieve top quality prints from digital output devices.



The **i1i0** is a robotic, automatic chart reading system that is designed to work with **i1Pro2** devices. It's ideal for photographers, designers, and printers who want to speed up and automate the measurement process. Simply plug in the device, align the test patch and the scanning table does all the work—no more manual strip reading!

PRODUCTION OPTIMIZATION

Making money in the ink-jet printing business means having the right dashboards to check margins and productivity. Here are three tools that will give printers better insight into their operations.



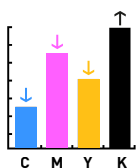
Improve your margins with **CostView**: see an overview of all your costs after you print

Included in VisualRIP+ and GrandRIP+. Not included in special editions.



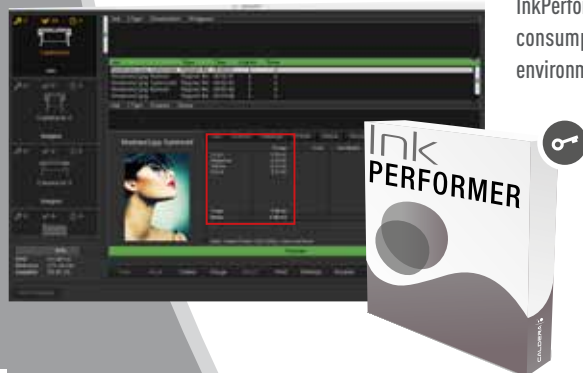
Within the simple Web browser interface, production managers can view jobs in the print or cut spooler in real-time, monitor ink and media usage and costs, plus add additional costs automatically.

- Verify how many square meters have been printed on a selected printer
- Verify ink & media consumption for a selected job



Optimize your ink consumption and cut costs with **InkPerformer**

InkPerformer delivers the power to track and optimize ink consumption, giving commercial printers a significant environmental and economic advantage over their competitors.



- Monitor and optimize ink consumption
- Save up to 35% in ink usage on print jobs
- Improve your environmental impact
- Rapid return on investment
- Multiple ink saving levels

View live operations data and key performance statistics with **Printboard**



Showing the daily square meter production rate, the rate per printing device, percentage of production per printer or group, plus the number of errors each day, PrintBoard presents this vital information alongside your job queue by device.

- Monitor your production workload
- Make informed decisions to improve your processes
- Preview real-time production statistics

QUALITY MONITORING

Print quality is about making sure that the files you are going to print meet industry standards – and your clients' expectations. Caldera delivers a raft of smart tools that help printers meet these objectives.

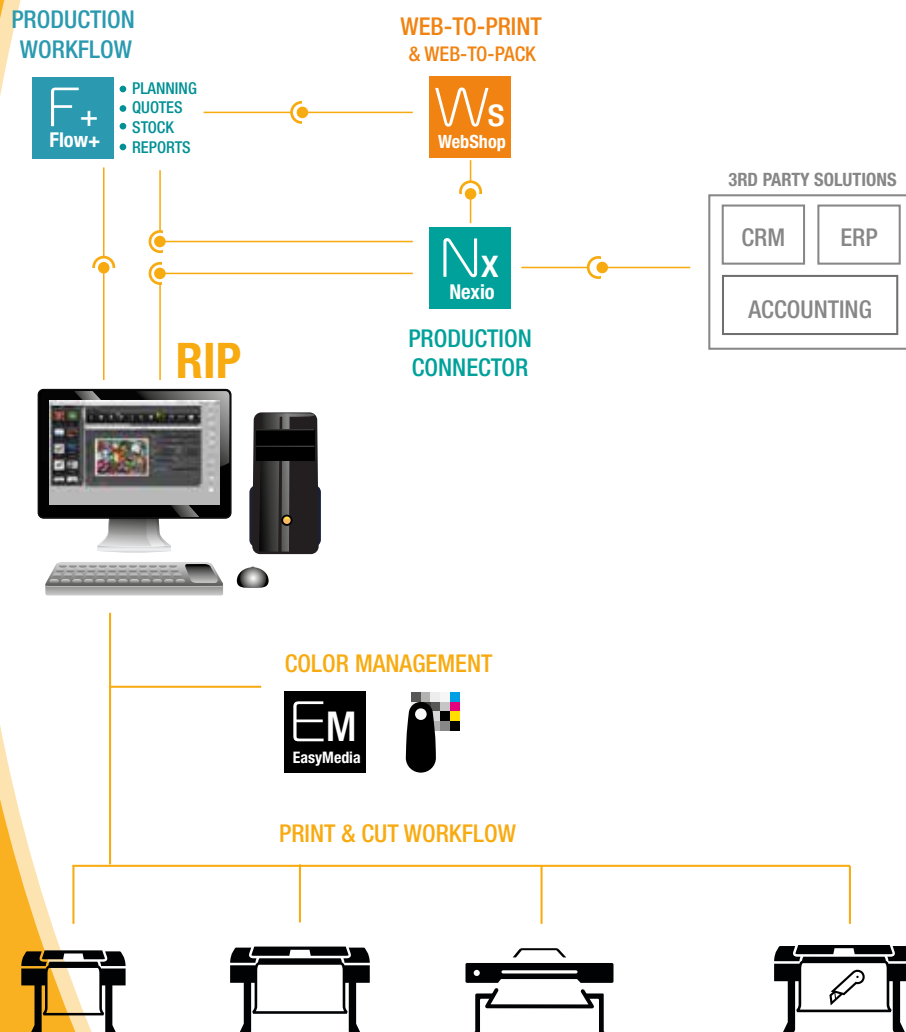
Check print file conformity to industry standards with **Print Standard Verifier**



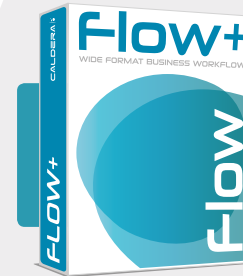
Caldera's Print Standard Verifier is the solution to the ever-increasing requests for standards compliance in the digital printing market. Users can now add print process checking tools to their Caldera RIP or workflow suite, guaranteeing repeatable, standardized output whenever they print.

- Ensure print process compatibility
- ISO, Fogra and G7 certification ready

A POWERFUL SUITE OF SOLUTIONS FOR STREAMLINING YOUR PRINT BUSINESS



CALDERA'S EXTENDED PRODUCT PORTFOLIO



A complete dashboard for print operations of any size

Flow+ is a complete software solution for organizing and running a wide-format print business, from quote to delivery. Whether you need to see a quick overview of your inventory, want to analyze your financial data or require a sales report, Flow+ is an essential tool for an efficient, productive wide-format print business.



A full-featured LFP Web-to-print and Web-to-Pack Solution

The only web-to-print solution developed specifically with wide-format printers in mind, Caldera WebShop helps you promote your products online, opening up new sales opportunities and increasing the number of orders coming into your business.



A Production Connector for reaching new levels of Automation

Nexio is a solution that connects the Caldera RIP and other third-party software using standard JDF/JMF protocols, making it possible to produce automatic sequences of actions that speed up production and advanced reports to improve operations. From ERP and accounting programs to web-based applications, Nexio connects the dots to save you time and money throughout your print production.

WORLDWIDE SUPPORT

Caldera's team of support and training specialists are committed to giving you fast, quality support.



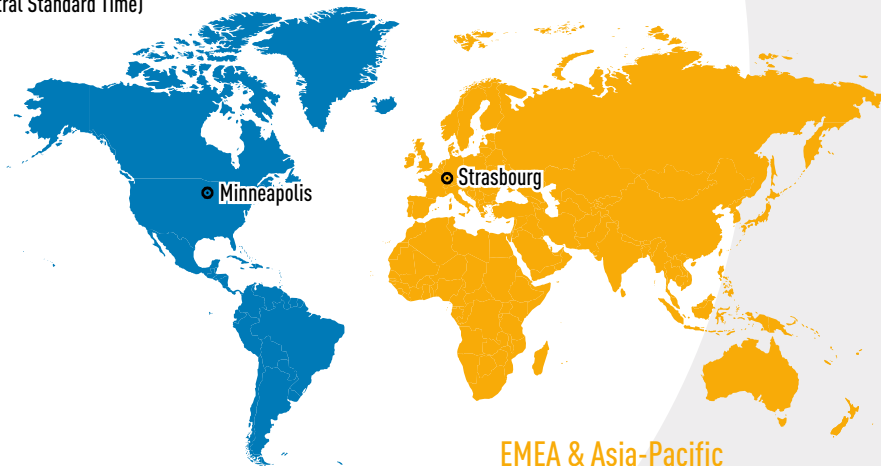
From the analysis of your production needs to the installation of our RIP software, from the training of your technicians to answering their day-to-day queries, Caldera's devoted professionals are ready for all your technical questions.

To better serve print houses, Caldera offers a full package of services:

- Access to worldwide support
- Email assistance and follow-up
- Direct access to the Caldera support team
- Remote maintenance (fixing issues on your computer using remote access)
- Free access to Caldera's Technical newsletter

The Americas

Monday – Friday
9:00 a.m. – 6:00 p.m.
(Central Standard Time)



EMEA & Asia-Pacific

Monday – Friday
9:00 a.m. – 12.45 p.m.
2:00 p.m. – 6:00 p.m.
(Strasbourg Time)

PC SOLUTIONS

High-end Dell PCs with Linux OS and Caldera RIP pre-installed



- Certified DELL OEM partner
- Guaranteed plug-and-print solution
- Full worldwide support
- No waiting for software installation

Caldera's choice of Dell as a hardware partner gives users a turn-key solution and helps our products benefit from greater accessibility and reliability thanks to Dell's renowned manufacturing quality.

High Velocity RIP solution for high-speed production



- Facilitates fast and fluent processing
- Enables high-volume throughput

The Caldera C4 Dynabytes platform incorporates a comprehensive set of advanced features to facilitate high performance, with a new set of algorithms designed to take full advantage of high speed GPU and hardware innovations.

C4 accommodates the demands of the latest series of digital ink-jet print engines, including textile platforms, which require high-volume throughput and support from a powerful front-end and workflow.

OEM & STRATEGIC PARTNERSHIPS

Driving more than 1,000 industry-leading printers

Caldera works close with leading manufacturers to develop solutions that are fully optimized to meet the diverse requirements of the market.

OEM Partners:



Supported Manufacturers:



Strategic Partners:



REFERENCES

Over 15,000 print service providers are equipped with our solutions and rely on Caldera to make every day productive.

Caldera is constantly looking towards the future and has expanded its ink-jet technical knowledge into new markets and applications, including manufacturing (ceramic, glass, wood and textile printing), packaging, labels and digital printing presses.

SIGN, DIGITAL GRAPHICS AND VISUAL COMMUNICATION:

Argentina: Gigantografica, Omnigraphics / **Australia:** Active Displays, GSP Print, Sumo Visual, Australian Graphics, Kings Cote, Resolution Imaging / **Austria:** Arian / **Belgium:** Dael Printing, Ye Print / **Brasil:** Dinamica, Pigmentum / **China:** Baicheng, Dong Sheng Advertising, Xiamen Art Printing / **Columbia:** Grupo Mercadeo / **Czech Republic:** Top Advert / **Egypt:** Five Stars / **France:** Comptoir de l'Image, Dodeka, DS Impression, Picto, France Affiches, Nice Colors, Ad Visuel, Mangold, Ceanothe, TopColor, Komosol Groupe / **Germany:** CeweColor, FlyerAlarm, DieDruckerei, Niggemeyer / **Hong Kong:** Art One Production, Professional Production, Tri Color / **Hungary:** Eclipse Print, OSG / **Italy:** DB Ingegneria dell'immagine, ImagingPro, Pixart Printing, TicTac / **Ireland:** Horizon Graphics, McGowans / **Japan:** Daido, Sign Artec, Tokyo Lithmatic / **Korea:** Dain Communication, Gaunet / **Malaysia:** Pixio / **Mexico:** Pancarta, Print / **New Zealand:** Broderick Print, Leeding Signs, Massy University, Print House, Boston Digital, Image Center, Original Screen / **Netherlands:** Big Impact, Probo Print / **Norway:** Megaprint / **Peru:** Litho Laser, Metacolor / **Poland:** City Service, Topcan / **Romania:** BigPrint / **Russia:** LIGO / **Serbia:** DPC, NS Plakat / **Singapore:** Film Screen, Siner Graphic / **Slovakia:** Double P / **South Africa:** Beith Digital, Prismaflex / **Sweden:** Big Image, Giganprint, Storbildsbolaget / **Taiwan:** Forms Surface, Gain How Printing, Group Color Digital Image / **UK:** Cestrian, Delta Display, Service Graphics / **United Arab Emirates:** Reprotronics / **United States:** Big Mountain Imaging, Brand Imaging Group, Coloredge, Duggal Visual Solutions, Ferrari Color, Firehouse Image Center, Pictura, Vision Integrated Graphics.

TEXTILE PRINTING:

Austria: Typico Megaprints, Druck.at / **Belgium:** Bioracer, Visix / **China:** Huzhou Anyge Digital Industry / **France:** Faber France, Duo Display, Ranitex / **Netherlands:** Van Straaten / **Poland:** Voigt Promotion

INDUSTRIAL PRINTING:

Austria: Kaendl / **Belgium:** Wollux / **Germany:** Villeroy & Boch / **Japan:** Goto Iron Works / **Korea:** Samyoung Industrial / **Singapore:** Sunway Woodcraft Construction, Tangs, Vim Technology & System Engineering / **UK:** Liquid Lens



SYSTEM REQUIREMENTS

PC:

Linux OS: CALDERA Debian 1.1, 2.0 or 2.1
RAM: 4GB or 8GB (recommended).
Minimum 1GB per core, recommended at least 2 GB per core.
Processor: Intel Core i3, i5 or i7.
HDD: 250GB
Monitor / Videocard: 1280x1024 minimum resolution

MAC:

MacBook Air and MacBook Pro not supported!
PPC based hardware (G5, G4, ...) not supported!
Hardware: Intel Core i3, i5 or i7 based Mac mini, iMac or Mac Pro.
System: OS 10.7+ (see the compatibilities)
RAM: 4GB or more. Minimum 1GB per core, recommended at least 2 GB per core.
HDD: 250GB
Monitor / Videocard: 1280x1024 minimum resolution

CONTACT US!

FREE CALDERA TRIAL VERSIONS ARE AVAILABLE ON OUR SITE:

Demonet : <http://demonet.caldera.com>

YOU CAN ALSO FIND A DEDICATED ONLINE RESOURCE FOR CALDERA USERS:

Usernet : <http://usernet.caldera.com>



WATCH OUR VIDEOS ON CALDERA TV!

Caldera TV : <http://caldera.tv>

OUR AWARDS

Caldera is an award-winning software solution recognized by industry professionals and magazines:



Top product RIP software: 2015, 2014, 2013, 2012, 2011, 2009, 2008

Top product workflow software: 2015, 2014, 2013

Top product color management software: 2014, 2010, 2009

Best overall product: 2010, 2009, 2008



Outstanding service award: 2013, 2012, 2011

Best Software Product of the Year: 2010, 2009, 2008, 2006, 2002



Best software award: 2013

Best innovative product software: 2012

Best innovative green product: 2012



RIP of the year: 2007

DISTRIBUTED BY

CALDERA - 1 rue des Frères Lumière - P.A. d'Eckbolsheim - BP 78002 - 67038 Strasbourg Cedex 2 - France
www.caldera.com - Tel. +33 388 210 000 - Fax +33 388 756 242 - contact@caldera.com

Copyright 2014 Caldera. All rights reserved. All trademarks, logos and brand names mentioned in this publication are property of their respective owners.

All images and photographs here featured are the copyright of their respective owners. Several images are copyright of istockphoto.com

* Caldera reserves the right to modify software specifications and content cited in this document without prior notice.